

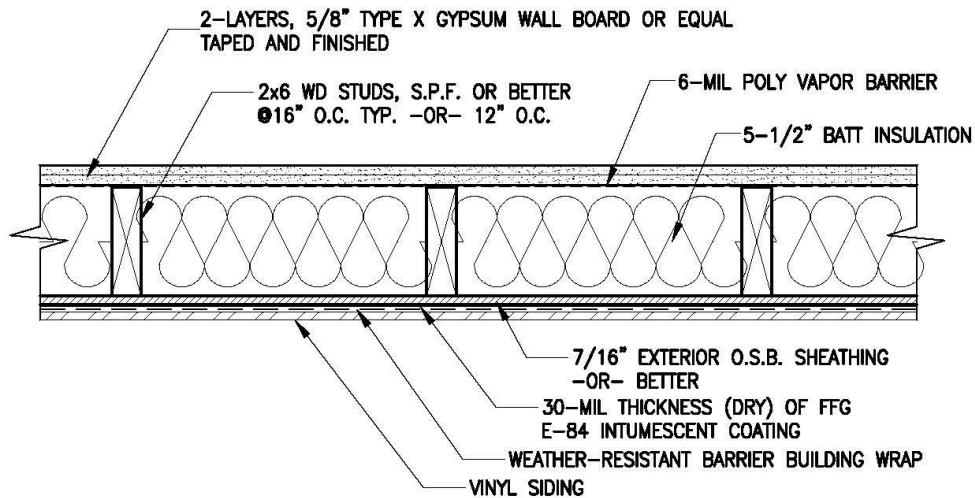


W-13

2 HOUR FIRE ASSEMBLY- WOOD FRAMED WALL W/ 7/16" EXTERIOR O.S.B. SHEATHING LOAD BEARING WALL

TYPICAL FRAME WALL ASSEMBLY: S.P.F. STUDS OR BETTER AT 16" O.C., WITH FIBERGLASS INSULATION, 2-LAYERS, TYPE X, 5/8" GYPSUM WALL BOARD (INTERIOR SIDE) W/ 7/16" O.S.B. EXTERIOR SHEATHING (EXTERIOR SIDE). EXTERIOR O.S.B. TREATED WITH 30-MIL THICKNESS (DRY) OF ForceField Fireguard E-84 TO EXTERIOR EXPOSED SIDE.

INTERIOR SIDE



EXTERIOR SIDE

FIRE TEST ENDURANCE RATING:	2 HOUR
STANDARD TESTED TO:	ASTM E-119-10b, UL 263, NFPA 251, ULC-S-101
FIRE TESTED LABORATORY:	GUARDIAN FIRE TESTING LABORATORIES 480 HINMAN AVE BUFFALO, NY 14216
REPORT NO:	GL 115511
PRODUCT:	ForceField FireGuard E-84 INTUMESCENT COATING (FFG E-84)
MANUFACTURER:	SHIELD INDUSTRIES, INC. 131 SMOKEHILL LANE WOODSTOCK, GA 30188
* SEE MANUFACTURER APPLICATION INSTRUCTIONS AND SPECIFICATIONS FOR SURFACE PREPARATION AND APPLICATION PROCESS	