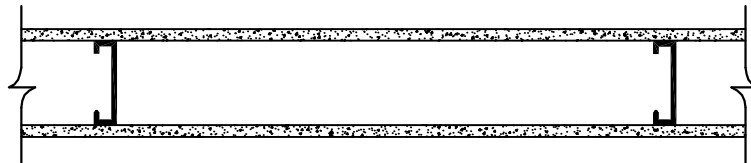




**S8**

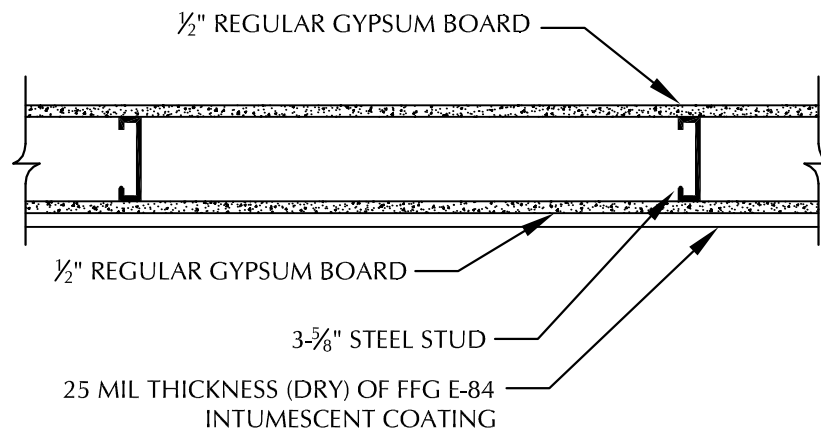
## 2 HOUR FIRE ASSEMBLY - STEEL FRAMED WALL w/ 1/2" GYPSUM BOARD

Typical Frame Wall Assembly 1/2" unrated Gypsum Wall Board attached to 3-5/8" steel studs at 24" o.c. with 1" Type S drywall screws 8" o.c. spread per local building code



**TO ACHIEVE 2 HOUR FIRE RATING:**

**APPLY 25 MIL THICKNESS (DRY) OF ForceField® FireGuard® E-84 TO EXPOSED SIDE OF GYPSUM BOARD**



SCALE: N.T.S.

<b>FIRE TEST ENDURANCE RATING:</b>	<b>2 HOUR</b>
<b>STANDARD TESTED TO:</b>	ASTM E-119
<b>FIRE TESTED LABORATORY:</b>	GUARDIAN FIRE TESTING LABORATORIES, INC. 480 HINMAN AVE. BUFFALO, NY 14216
<b>REPORT NO:</b>	GL 47510-2
<b>PRODUCT:</b>	ForceField® FireGuard® E-84 INTUMESCENT COATING (FFG E-84)
<b>MANUFACTURER:</b>	SHIELD INDUSTRIES, INC. 131 SMOKEHILL LANE WOODSTOCK, GA 30188

\* SEE MANUFACTURER APPLICATION INSTRUCTIONS AND SPECIFICATIONS FOR SURFACE PREPARATION AND APPLICATION PROCESS