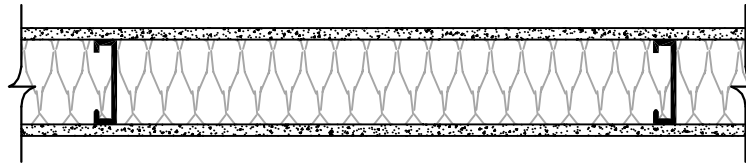




(S4)

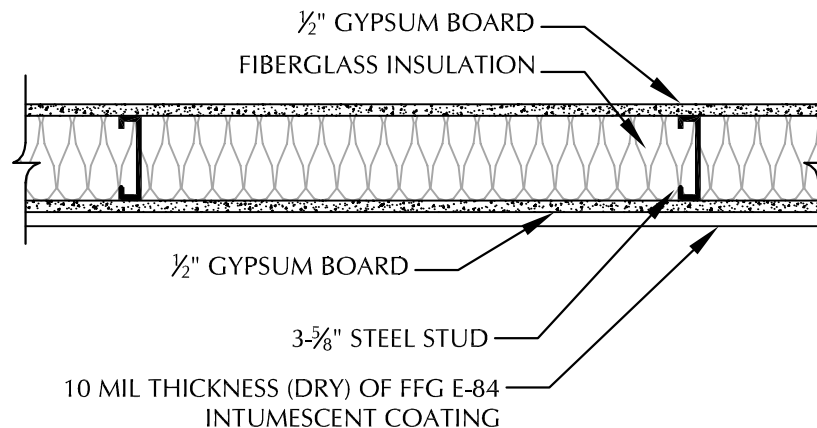
## 2 HOUR NFPA 251 FIRE ASSEMBLY - STEEL FRAMED WALL w/ ½" GYPSUM BOARD

Typical Frame Wall Assembly ½" Gypsum Wall Board attached to 3-⅝" steel studs at 24" o.c. with fiberglass insulation and 1" Type S drywall screws 8" o.c. spread per local building code



TO ACHIEVE 2 HOUR NFPA FIRE RATING:

APPLY 10 MIL THICKNESS (DRY) OF ForceField® FireGuard® E-84 TO EXPOSED SIDE OF GYPSUM BOARD



SCALE: N.T.S.

FIRE TEST ENDURANCE RATING:	2 HOUR
STANDARD TESTED TO:	NFPA-251
FIRE TESTED LABORATORY:	GUARDIAN FIRE TESTING LABORATORIES, INC. 480 HINMAN AVE. BUFFALO, NY 14216
REPORT NO:	GL 61011-2 NFPA-251
PRODUCT:	ForceField® FireGuard® E-84 INTUMESCENT COATING (FFG E-84)
MANUFACTURER:	SHIELD INDUSTRIES, INC. 131 SMOKEHILL LANE WOODSTOCK, GA 30188

\* SEE MANUFACTURER APPLICATION INSTRUCTIONS AND SPECIFICATIONS FOR SURFACE PREPARATION AND APPLICATION PROCESS