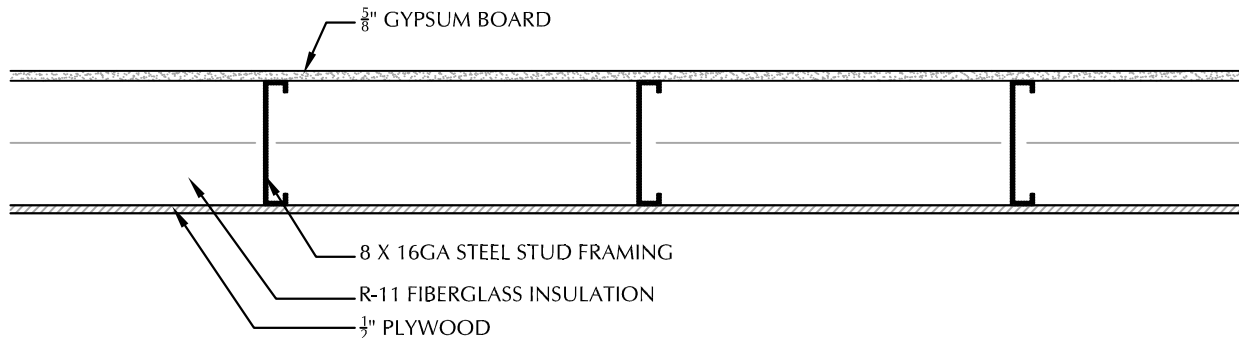


S-11

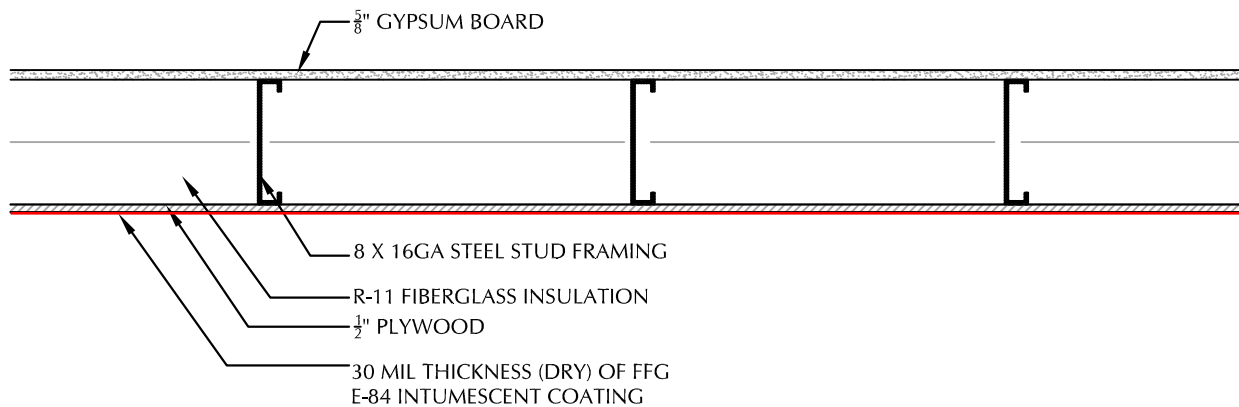
2 HOUR FIRE ASSEMBLY: STEEL STUD WALL

8 X 16GA STEEL STUD FRAMING, $\frac{1}{2}$ " PLYWOOD ON EXPOSED FACE AND $\frac{5}{8}$ " GYPSUM BOARD SHEATHING ON UNEXPOSED SIDE WITH R-11 FIBERGLASS INSULATION



TO ACHIEVE 2 HOUR FIRE RATING:

Apply 30 mil thickness (dry) of Forcefield® Fireguard® E-84 to exposed face of plywood



SCALE: N.T.S.

| | |
|-----------------------------|--|
| FIRE TEST ENDURANCE RATING: | 2 HOUR |
| STANDARD TESTED TO: | ASTM E-119-10b, UL 263, NFPA 251, ULC-S-101 Building Construction and Materials |
| FIRE TESTED LABORATORY: | GUARDIAN FIRE TESTING LABORATORIES, INC. 480 HINMAN AVE. BUFFALO, NY 14216 |
| REPORT NO: | GL115511 & EER 25613 |
| PRODUCT: | ForceField® FireGuard® E-84 INTUMESCENT COATING (FFG E-84) |
| MANUFACTURER: | SHIELD INDUSTRIES, INC. 131 SMOKEHILL LANE WOODSTOCK, GA 30188 |

* SEE MANUFACTURER APPLICATION INSTRUCTIONS AND SPECIFICATIONS FOR SURFACE PREPARATION AND APPLICATION PROCESS