

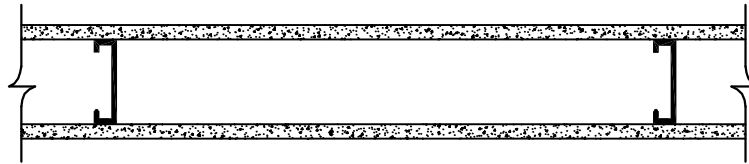


## Shield Industries, Inc.

(S10)

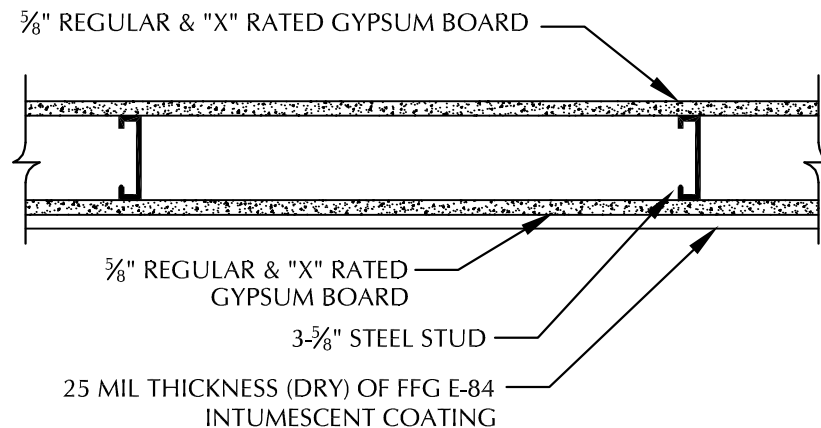
### 2 HOUR FIRE ASSEMBLY - STEEL FRAMED WALL w/ $\frac{5}{8}$ " GYPSUM BOARD

Typical Frame Wall Assembly  $\frac{5}{8}$ " unrated and "X" rated Gypsum Wall Board attached to 3- $\frac{5}{8}$ " steel studs at 24" o.c. with 1" Type S drywall screws 8" o.c. spread per local building code



#### TO ACHIEVE 2 HOUR FIRE RATING:

APPLY 25 MIL THICKNESS (DRY) OF ForceField® FireGuard® E-84 TO EXPOSED SIDE OF GYPSUM BOARD



SCALE: N.T.S.

FIRE TEST ENDURANCE RATING:	2 HOUR
STANDARD TESTED TO:	ASTM E-119
FIRE TESTED LABORATORY:	GUARDIAN FIRE TESTING LABORATORIES, INC. 480 HINMAN AVE. BUFFALO, NY 14216
REPORT NO:	GL 47510-2
PRODUCT:	ForceField® FireGuard® E-84 INTUMESCENT COATING (FFG E-84)
MANUFACTURER:	SHIELD INDUSTRIES, INC. 131 SMOKEHILL LANE WOODSTOCK, GA 30188

\* SEE MANUFACTURER APPLICATION INSTRUCTIONS AND SPECIFICATIONS FOR SURFACE PREPARATION AND APPLICATION PROCESS